



Classically Yours

Since 1947 | 2011-2012 Season

CWSO Celebrating 63 years!

Welcome to our 63rd year! I think you'll agree that we have a dynamic and versatile season planned for you. To open the year we'll feature a concert of some of the favorites of the symphonic repertoire including works by Grieg, Ravel, Copland, Borodin and the iconic 1812 Overture by Tchaikovsky.

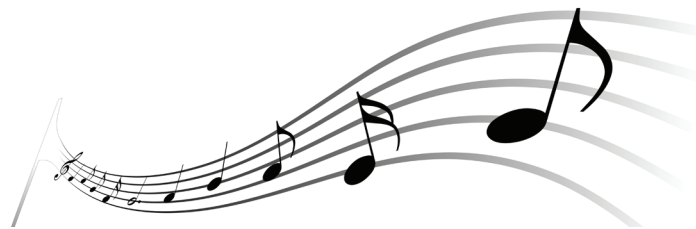
December's concert series includes a family matinee and will feature our Young Artist Competition winner plus Menotti's wonderful one-act opera, *Amahl and the Night Visitors*.

In February we've invited the highly acclaimed Chaise Lounge sextet from the Washington D.C. area who will perform some jazz standards with the orchestra. You will love these guys and a gal! You'll also hear some favorites by Bernstein and Gershwin.

The final concert will end the season with a bang! Piano virtuoso Raffi Besalyan will play *Beethoven's Emperor Concerto* and we'll finish with the epic *Symphony No. 5* by Shostakovich.

We are hoping to see you for what is shaping up to be an outstanding season!

- Patrick Miles, Music Director



Family Matinee 12/4/11

Children \$5

Adults \$10

Family up to 5 with at least one adult \$20 (plus mandatory handling fee)

Artistic Season 2011-2012

Concert I **Classical Favorites** (October 8 and 9, 2011)

- Copland – *Fanfare for the Common Man*
- Grieg – *Peer Gynt Suite No. 1, Op. 46*
- Borodin – *Polovetsian Dances*
- Ravel – *La Tombeau du Couperin*
- Tchaikovsky – *1812 Overture, Op. 49*

The Central Wisconsin Symphony Orchestra opens with a bang and a BOOM! We welcome home UW-Stevens Point Alumni with Tchaikovsky's *1812 Overture*, the sprightly *Polovetsian Dances* by Alexander Borodin and Copland's *Fanfare for the Common Man* are balanced with *Peer Gynt Suite No. 1* by Edvard Grieg and Ravel's *Le Tombeau du Couperin*.

Concert II **Classic Holiday** (December 3 and 4, 2011)

Menotti – *Amahl and the Night Visitors*

Let your holiday season begin with the CWSO! Hear the 2011 Young Artist Competition winner perform with the orchestra, followed by Gian Carlo Menotti's holiday favorite *Amahl and the Night Visitors*. The CWSO brings this touching one act opera to life with students from the UW-Stevens Point Opera Workshop, including a stunning backdrop of scenery and costumes. A special version of this concert just for families will be featured at 1:00 p.m. on Sunday, December 4!

Concert III **American Classics** (February 25 and 26, 2012)

- Bernstein – *West Side Story Overture*
- Gershwin – *Selections from Porgy and Bess*
- Gershwin – *American in Paris*
- Charlie Barnett sextet- *Chaise Lounge*

Close the door on the winter winds and warm up with *Chaise Lounge*, an award-winning band comprised of five of the top jazz musicians from the Washington D.C. area with the soft, luminous vocals of Marilyn Older. They will join with the CWSO in a performance featuring sparkling arrangements of standards and original tunes. *Chaise Lounge* performs a blend of music that sounds like it was recorded at Capitol Recording Studios in 1962 and somehow found its way to today's pop charts. Also on the program are classic American favorites by Leonard Bernstein and George Gershwin, including *West Side Story* and selections from *Porgy and Bess*.

Concert IV **Classic Artistry** (April 21 and 22, 2012)

- Beethoven – *Piano Concerto No. 5 in E flat, Op. 73 "Emperor"*
Raffi Besalyan, piano
- Shostakovich – *Symphony No. 5, Op. 47*

The season ends on a high note as UWSP Artist-Teacher- Associate Professor of Piano Raffi Besalyan performs Beethoven's last piano concerto, *Piano Concerto No.5 in E-flat major ("Emperor")*, Op. 73. Besalyan has gained world-wide acclaim and has been hailed as the "true heir of the mainstream of Russian pianism, like Horowitz" (Chopin Magazine, Japan) The CWSO's 63rd season is ushered out as powerfully as it came in with Dmitri Shostakovich's *Symphony No. 5*.

TICKET ORDER FORM

Season and Single Ticket Order Form

Season Tickets (Four concerts, reserved seating)

Adult	\$65 x _____	\$ _____
Student (with I.D.)	\$20 x _____	\$ _____
Handling Fee	\$6.50 x _____	\$ _____
Total (tickets plus mandatory handling fee)		\$ _____

Individual Tickets

Adult	\$20 x _____	\$ _____
Student (with ID)	\$5 x _____	\$ _____
Handling Fee	\$2.50 x _____	\$ _____

Please indicate dates of single tickets and number ordered for each here:

Total (tickets plus mandatory handling fee) \$ _____

If ordering student tickets, please include I.D. number with dates of expiration OR a photocopy of I.D.

Tickets will be processed in early September and mailed to the address indicated:

Name _____

Address _____

City _____ State _____ ZIP _____

Daytime Telephone _____

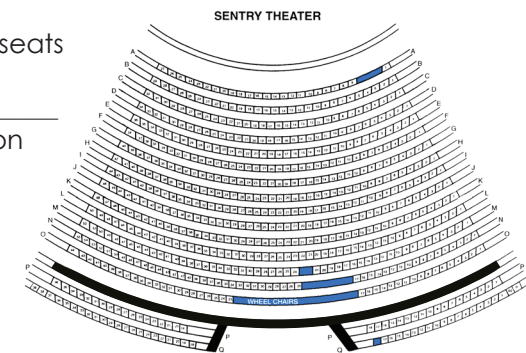
E-Mail Address _____

The CWSO does not share e-mail or address lists.

As we are communicating mostly via e-mail, your address is very important!

Important! Please complete the following:

- I am a new subscriber
- I wish to renew my present seats
 - Saturday Sunday
 - Row _____ Seats _____
- I wish to change my location
(Indicate with an "x" on diagram)



ORDER NUMBER (office only)

SEAT ASSIGNMENT (office only)

see reverse side for payment information